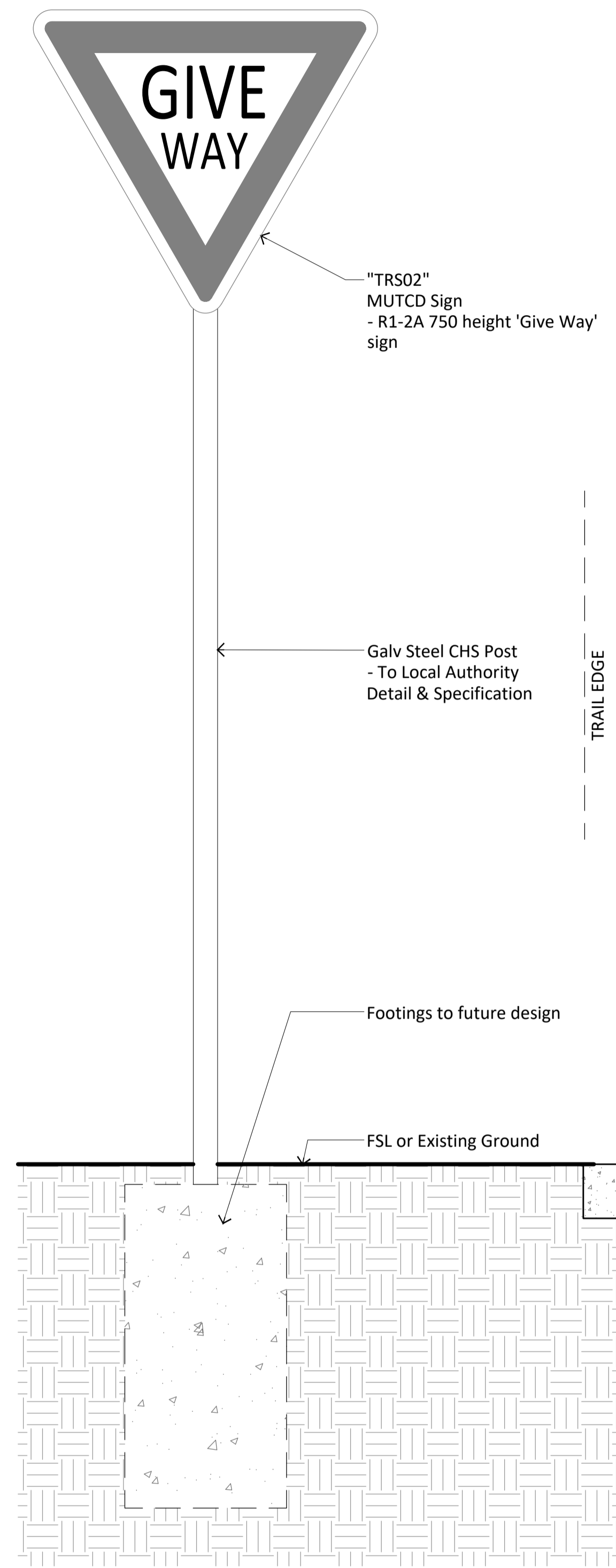
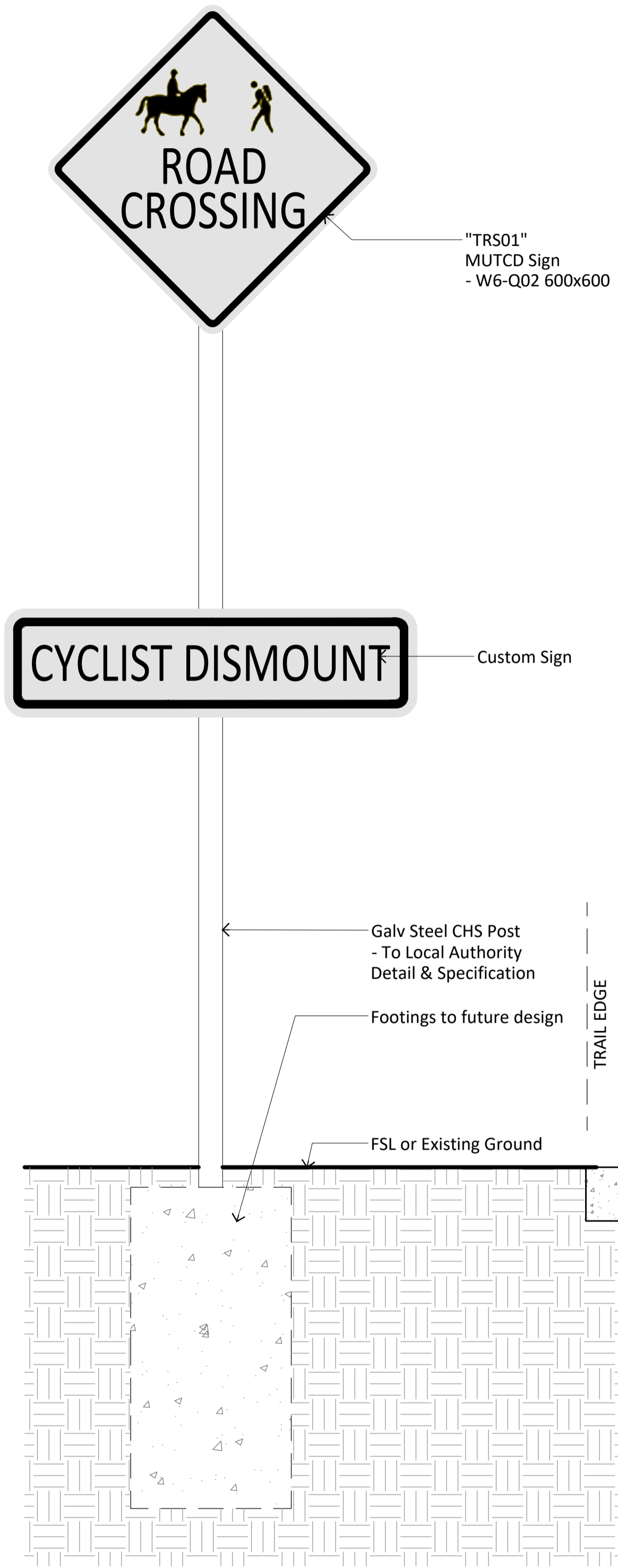


1 ROAD SIGNAGE - RS01, RS02, RS03  
1:10

DRAFT

ISSUE	DETAILS	DATE	DES	DC	QA
D	DRAFT CONCEPT DESIGN	2021-09-07	NH	GE	GE
C	DRAFT CONCEPT DESIGN	2021-08-27	NH	GE	GE
B	DRAFT CONCEPT DESIGN	2021-07-16	AS	ME	GE
A	DRAFT CONCEPT DESIGN	2021-06-18	ME	ME	GE



1 TRAIL SIGNAGE - TRS01  
LD01 1:10

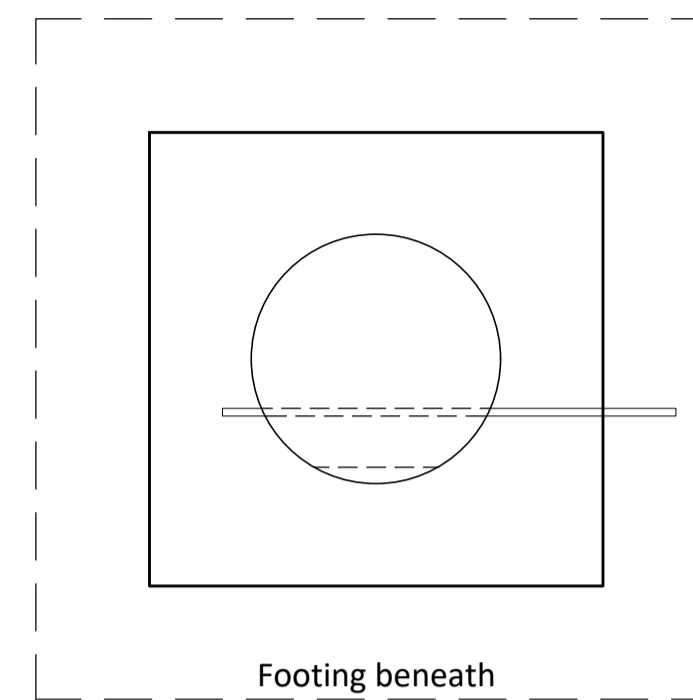
2 TRAIL SIGNAGE - TRS02  
1:10

**DRAFT**

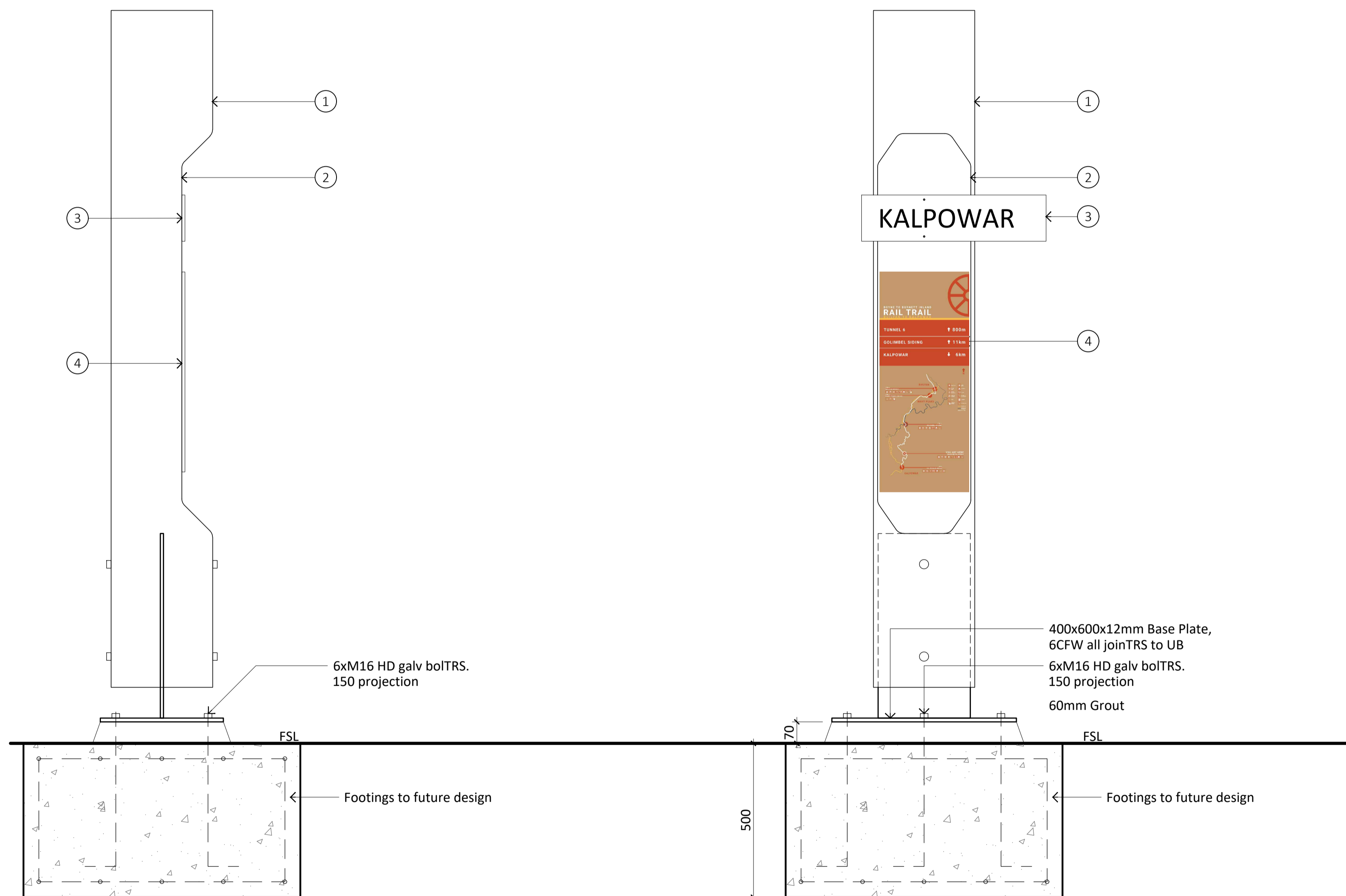
ISSUE	DETAILS	DATE	DES	DC	QA
D	DRAFT CONCEPT DESIGN	2021-09-07	NH	GE	GE
C	DRAFT CONCEPT DESIGN	2021-08-27	NH	GE	GE
B	DRAFT CONCEPT DESIGN	2021-07-16	AS	ME	GE
A	DRAFT CONCEPT DESIGN	2021-06-18	ME	ME	GE

**NOTES:**

- ① **TIMBER POST - ROUND:** Ironbark Bush Pole. 300-350mm diameter fixed to frame with 4 M16 4.6/S BolTRS. (2 top, 2 bottom)  
Finish: Wire brushed and Light Sanded finish. No Oil to achieve "aged" look
- ② **ROUTED 'HOG BACK' STYLE CAVITY:**
- ③ **LOCATION SIGN:**  
One for each town. To both sides of sign.  
**Lettering:** 3mm, Laser cut, Powder-coated Aluminium plate mounted on the backing plate to sizes shown on details. Colour: TBC  
**Backing Plate:** 3mm Galv. Steel Plate to sizes shown on details.  
Fixed to Timber Sleepers with vandal proof screws
- ④ **SIGNAGE PLATE:**  
600x420mm (A2 Paper size) signage panel - Artwork and materials TBC  
Fixed to Timber Sleepers with vandal proof screws



③ TRS03 - SIDING TOTEM - TOP  
1:10

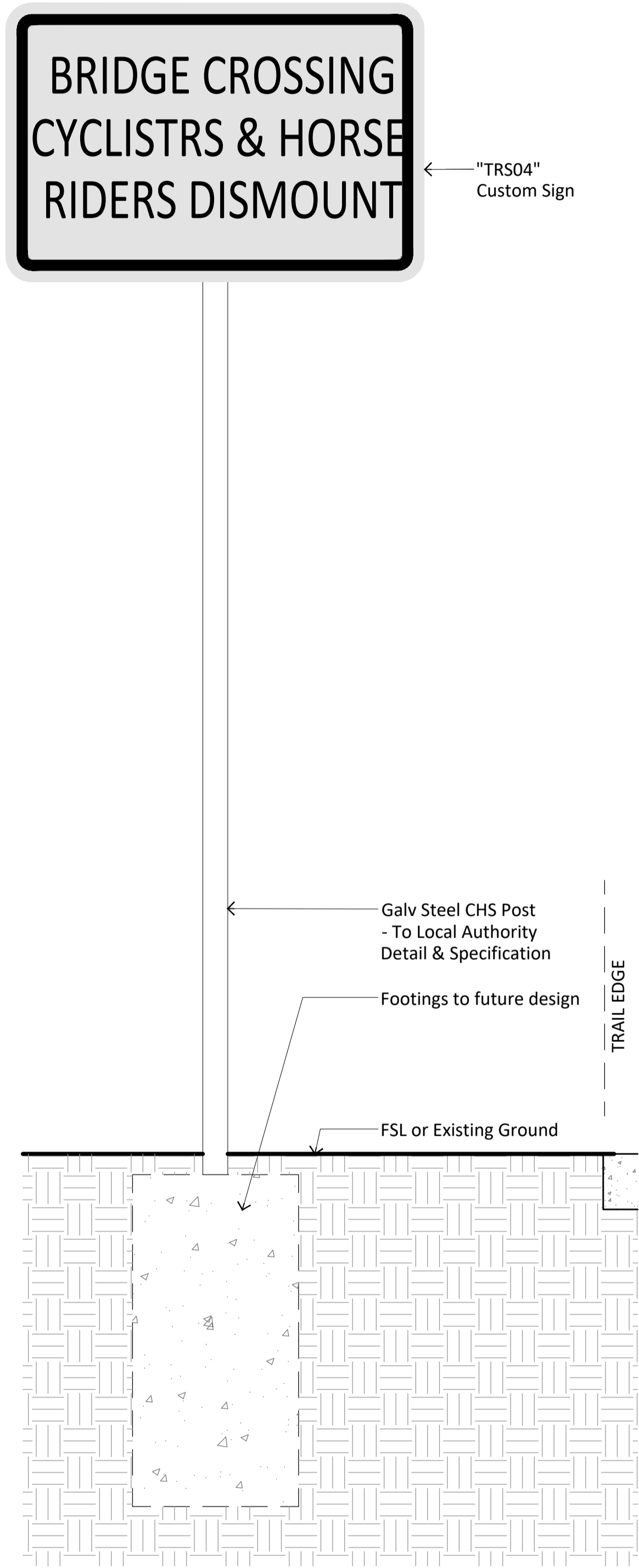


① TRS03 - SIDING TOTEM - SIDE  
1:10

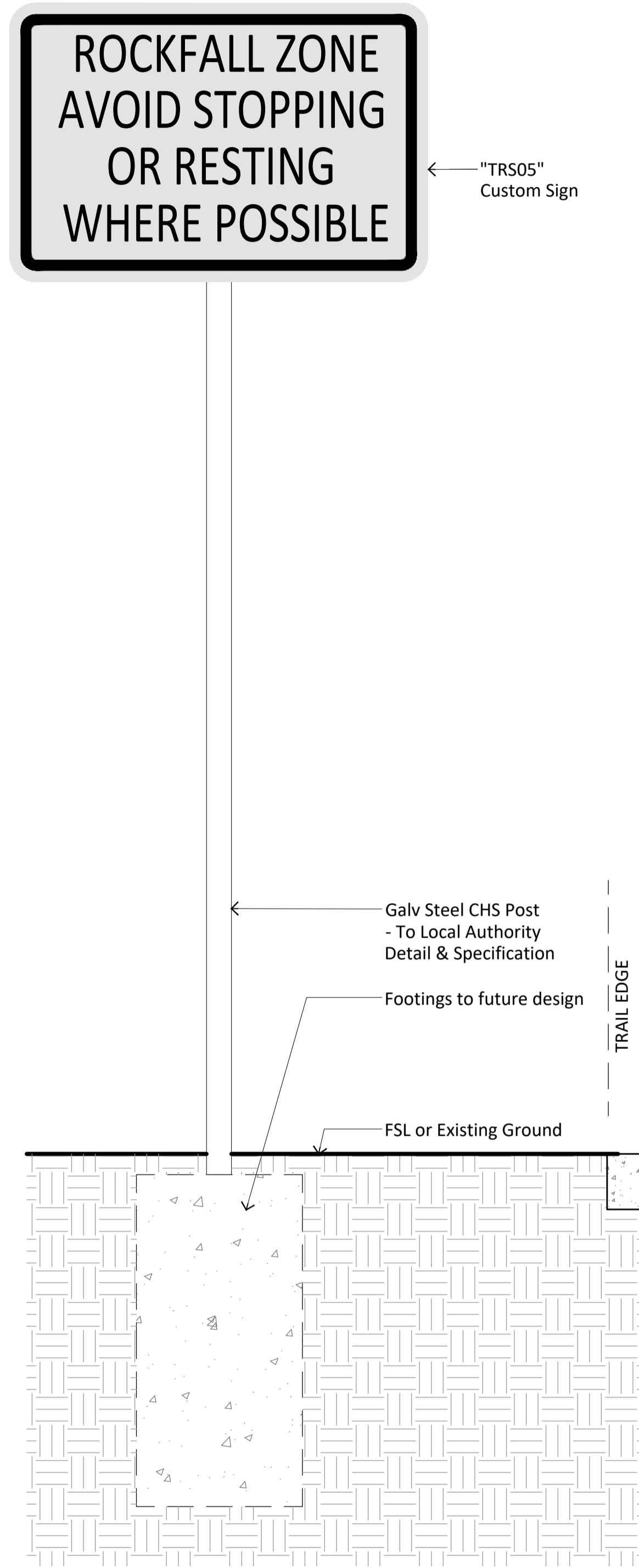
② TRS03 - SIDING TOTEM - FRONT  
1:10



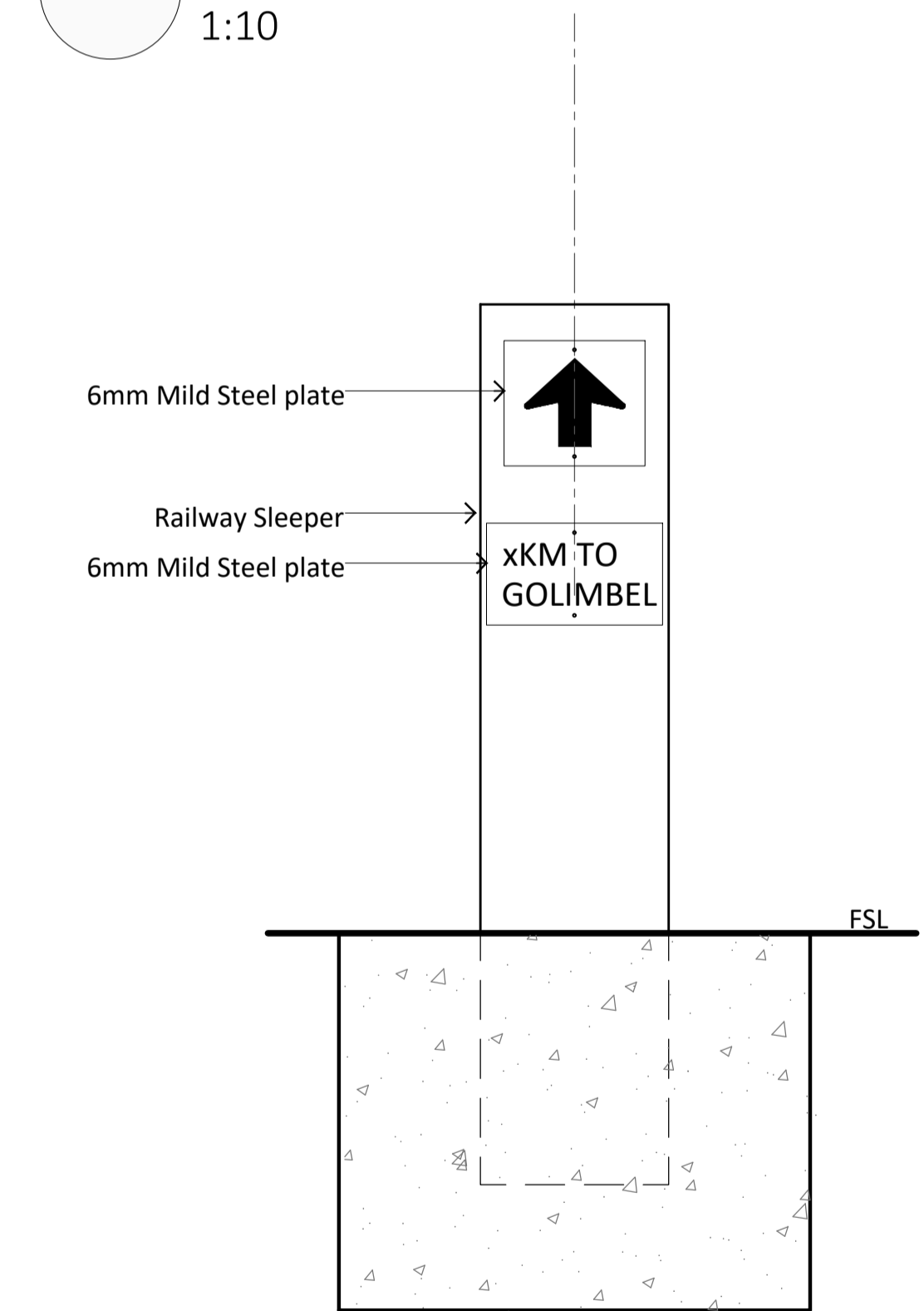
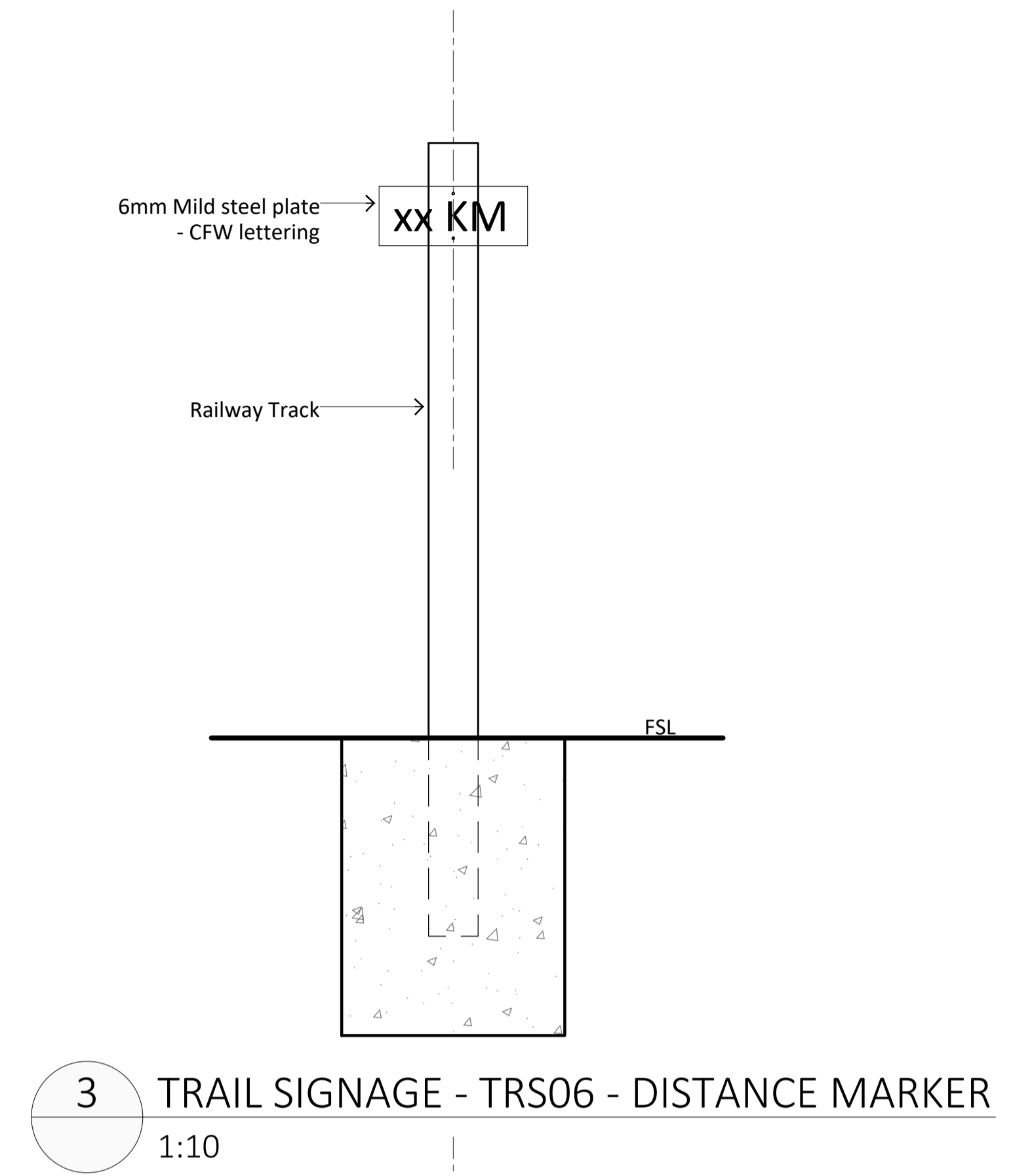
④ TRS03 LOCATION SIGN  
1:5



1 TRAIL SIGNAGE - TRS04  
1:10



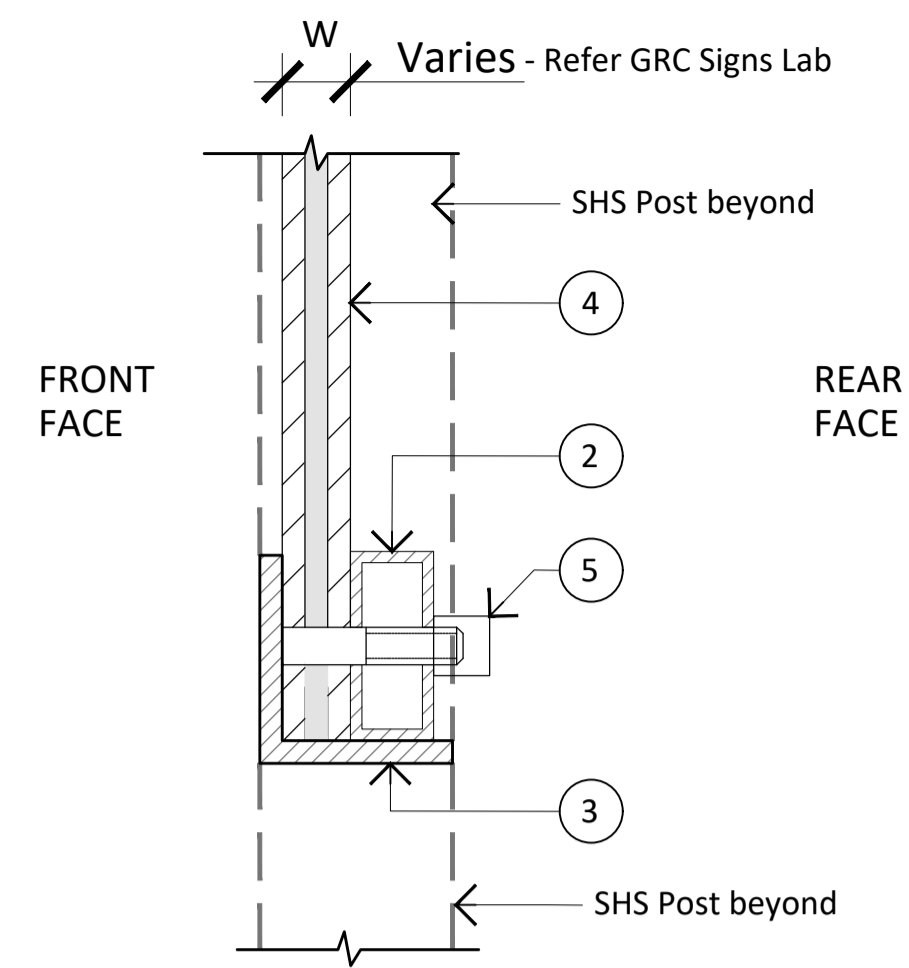
2 TRAIL SIGNAGE - TRS05  
1:10



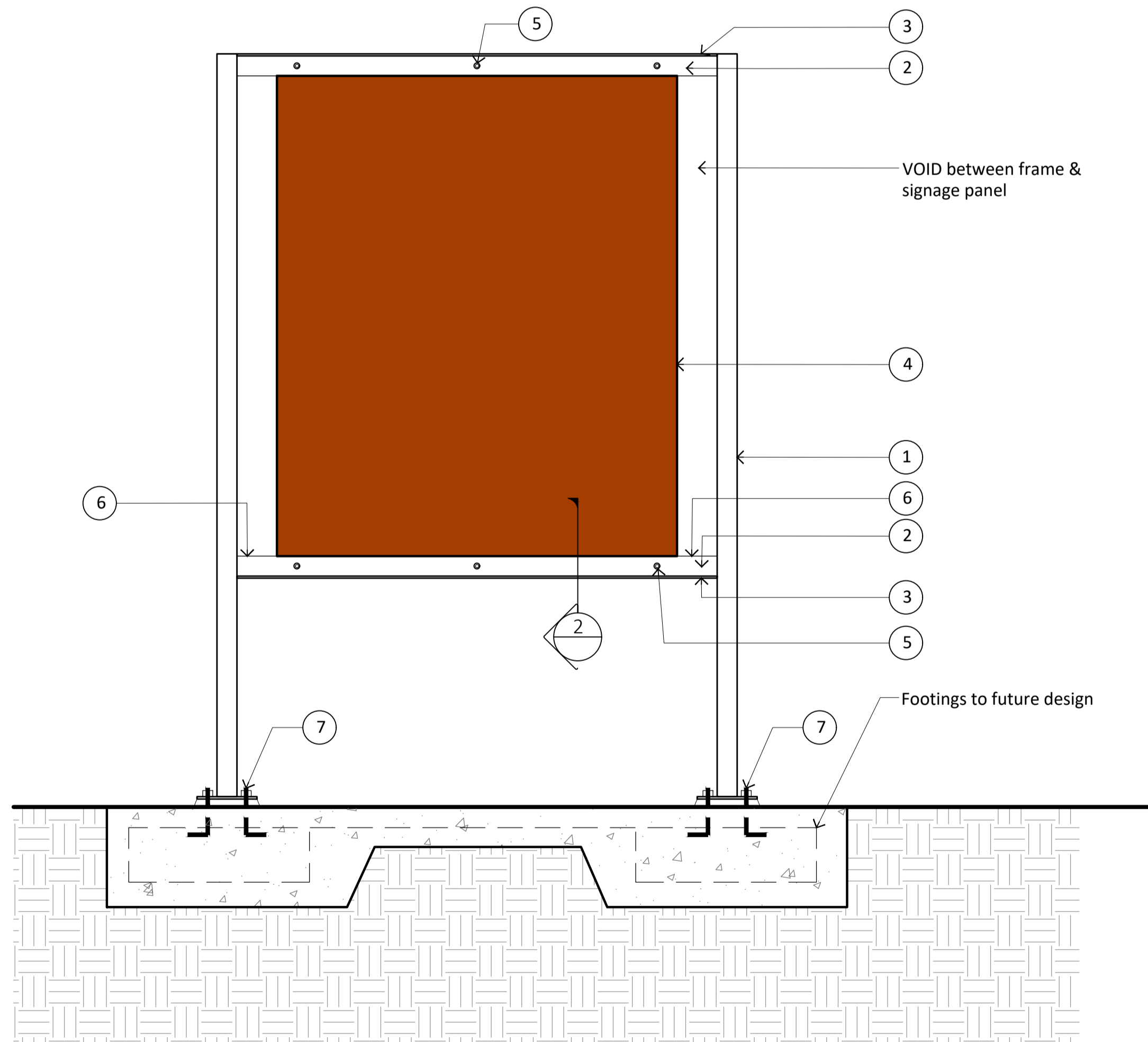


**NOTES:**

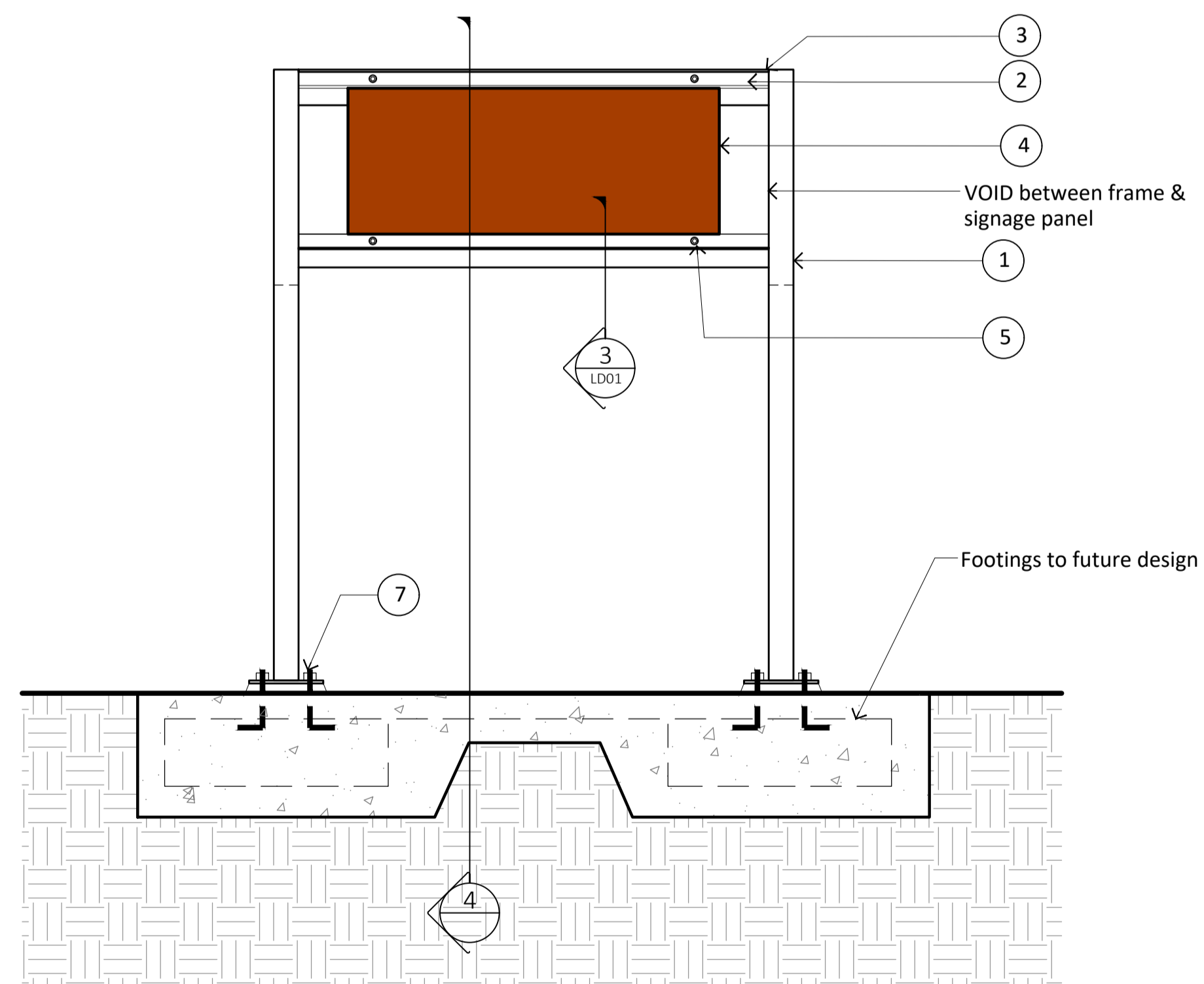
- ① **FRAME POST** - 50x50x4 SHS. Galv mild steel with Dulux White powdercoat finish. 5 CFW to frame members prior to finish application.
- ② **FRAME RAIL** - 50x25x3 RHS. Galv steel with Dulux White powdercoat finish. 5 CFW to frame members, drill holes for fixings, & cold galv spray all welds & drill holes prior to powdercoat application.
- ③ **FRAME TOP & BOTTOM PLATE** - 55x55x5 Galv steel angle with Dulux White powdercoat finish. 5 CFW to frame members, drill holes for fixings, & cold galv spray all welds & drill holes prior to powdercoat application.
- ④ **SIGNAGE PANEL** - Detail TBC
- ⑤ **SIGNAGE PANEL FIXING** - Nom M6 SS vandal proof bolt fixing. Tack weld to back of frame rail (No.2 in Legend Notes)
- ⑥ **FRAME RAIL PACKER** - Nom 50x25x3 RHS. Cut down one side to match signage panel width - width TBC. Galv steel with Dulux White powdercoat finish. CFW to frame rail & cold galv spray all welds & drill holes prior to powdercoat application. - Refer Detail 4 this sheet.
- ⑦ **BASE PLATE & FIXING** - 150x150x6 Galv steel plate with Dulux White powdercoat finish. CFW to postTRS & cold galv spray all welds prior to powdercoat application.



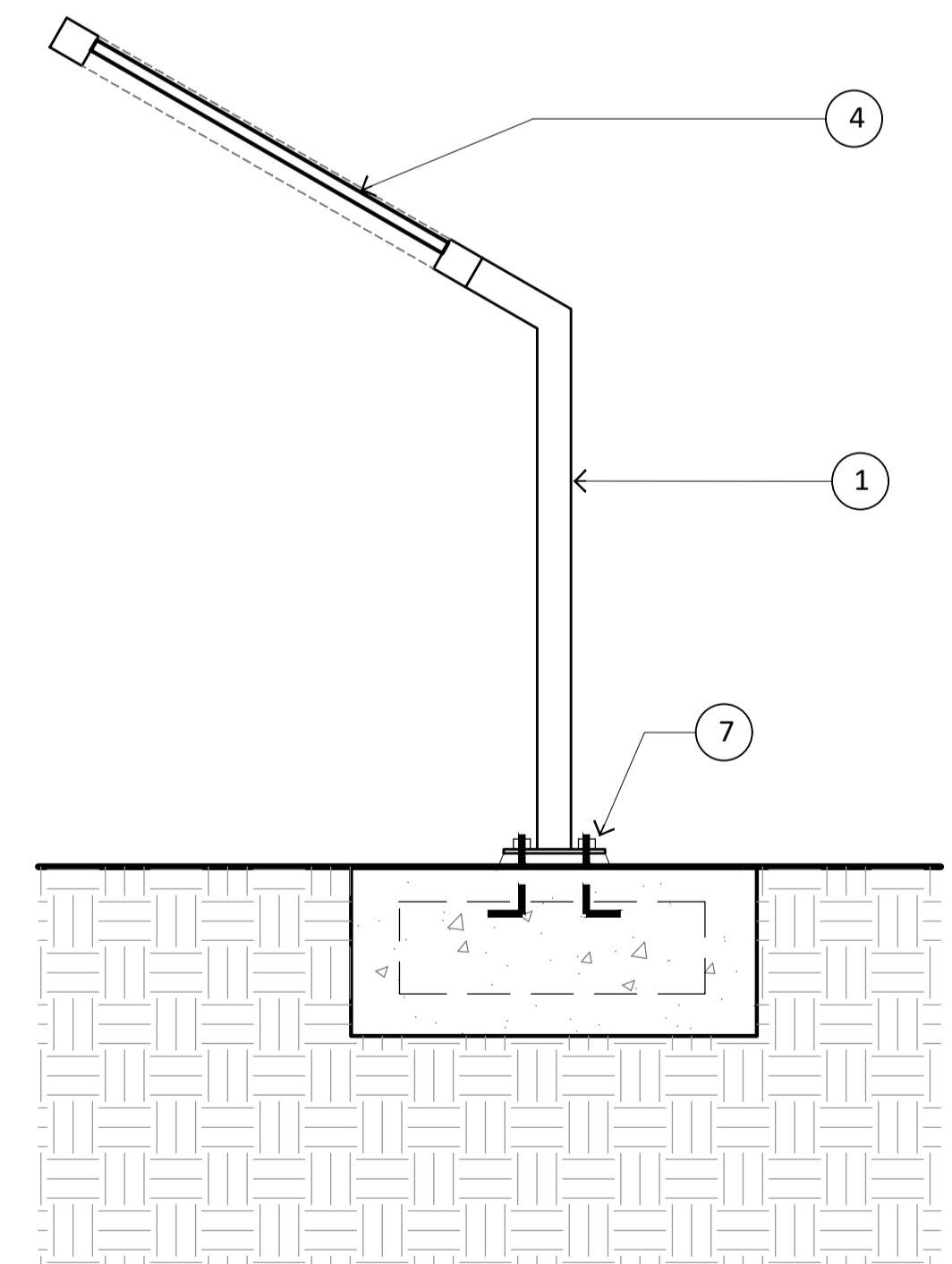
② TRAIL SIGNAGE - PANEL FIXING  
1:2



① TRAIL SIGNAGE - TRS08 CODE OF CONDUCT & TRS09 INTERP LARGE  
1:10



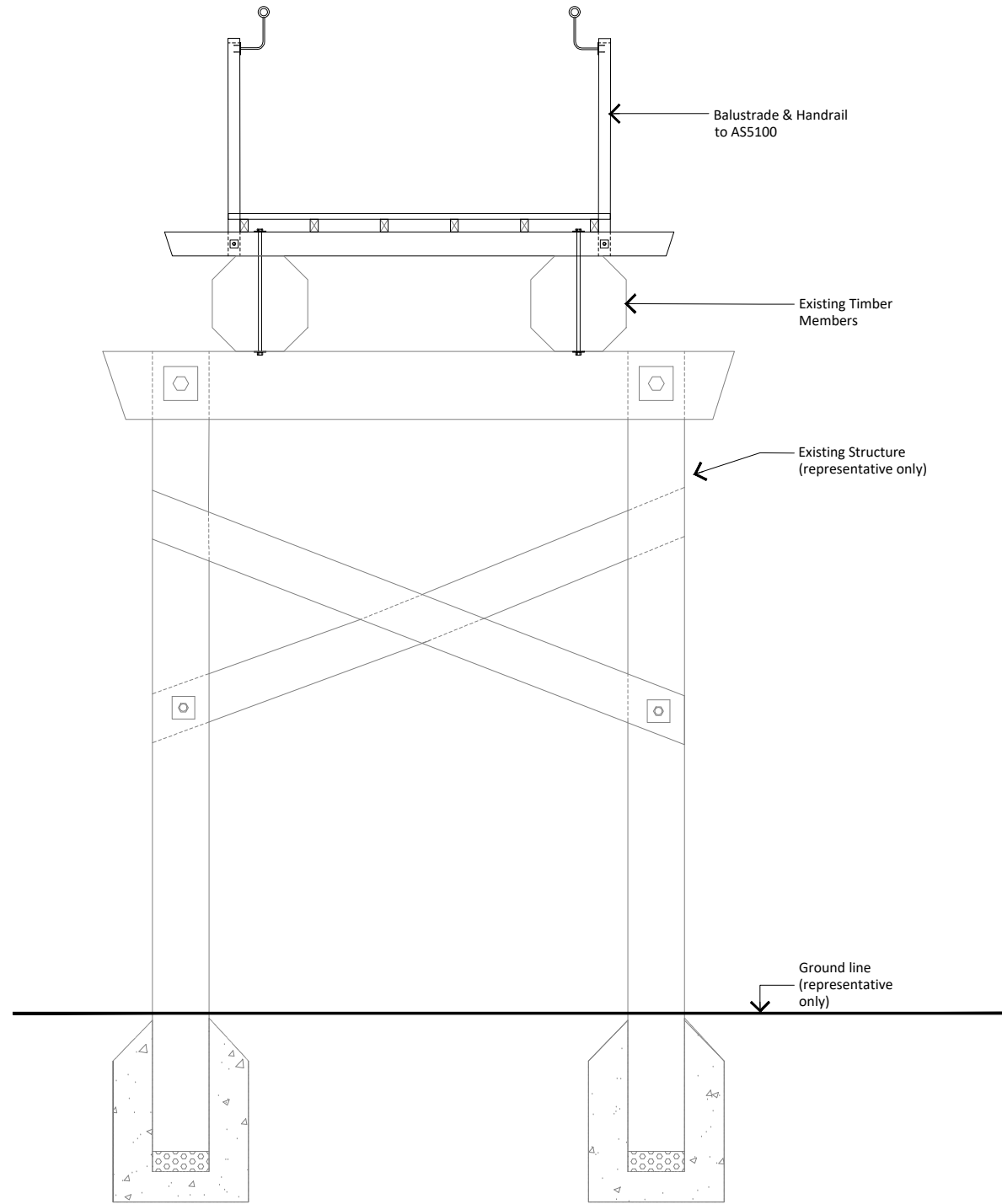
③ TRAIL SIGNAGE - TRS10 INTERP SMALL  
1:10



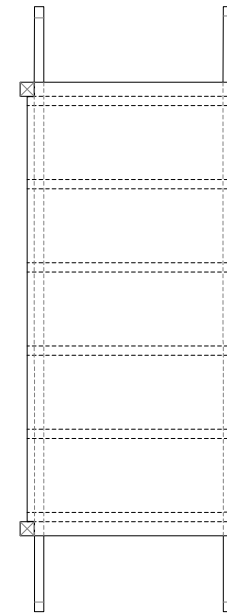
④ TRAIL SIGNAGE - TRS10 SIDE ELEVATION  
1:10

**NOTES**

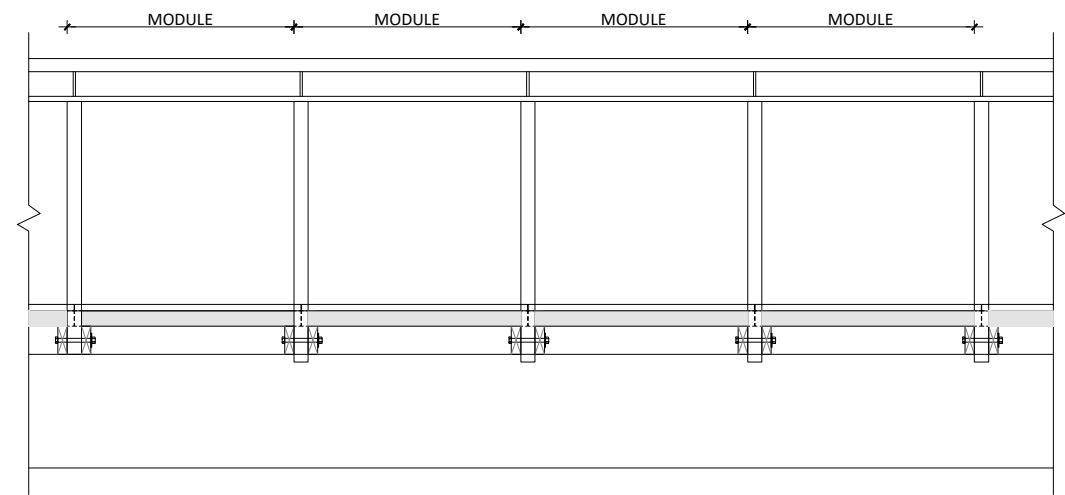
This bridge and balustrade is suited to protect cyclists as per Australian Standard AS 5100.  
 If horses are to be ridden across bridges while mounted, this will need to be taken into consideration during detailed design.



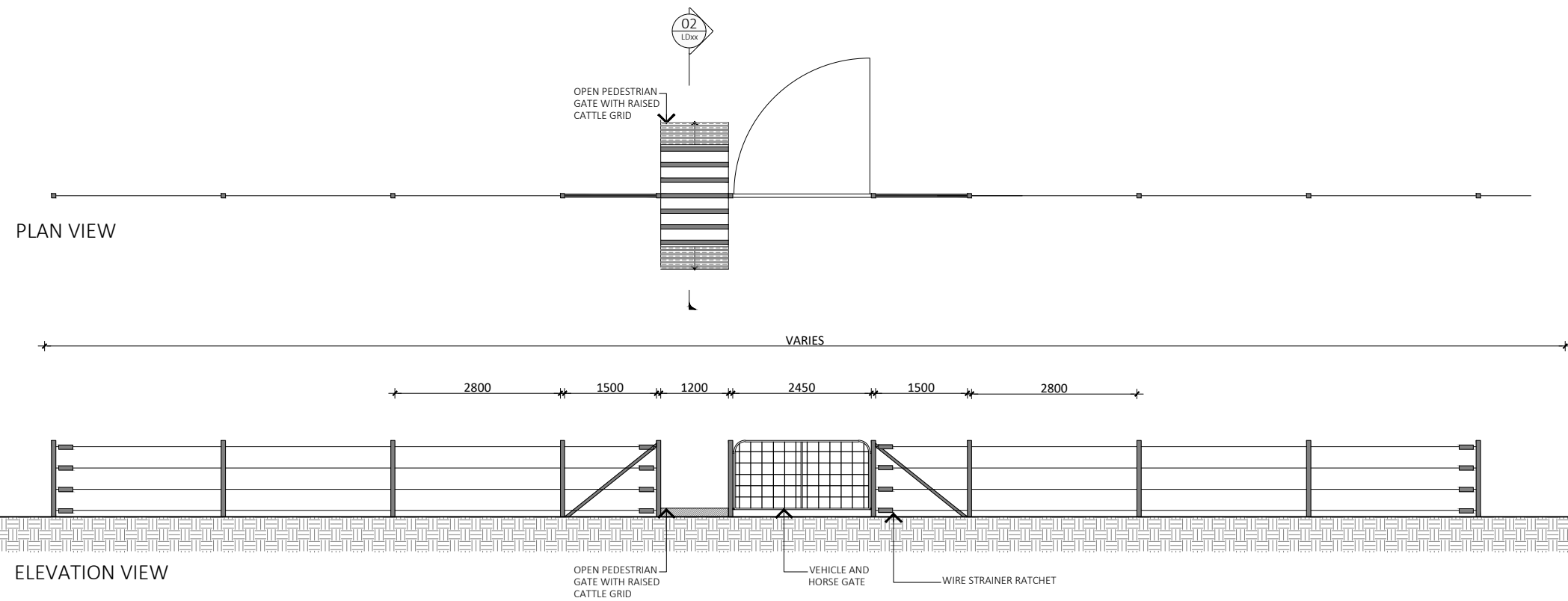
**1** MODULAR BOARDWALK WITH HANDRAIL  
1:20



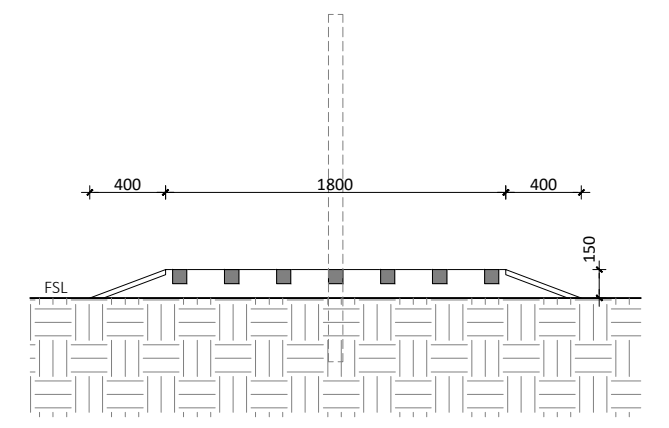
**2** MODULE PLAN  
1:20



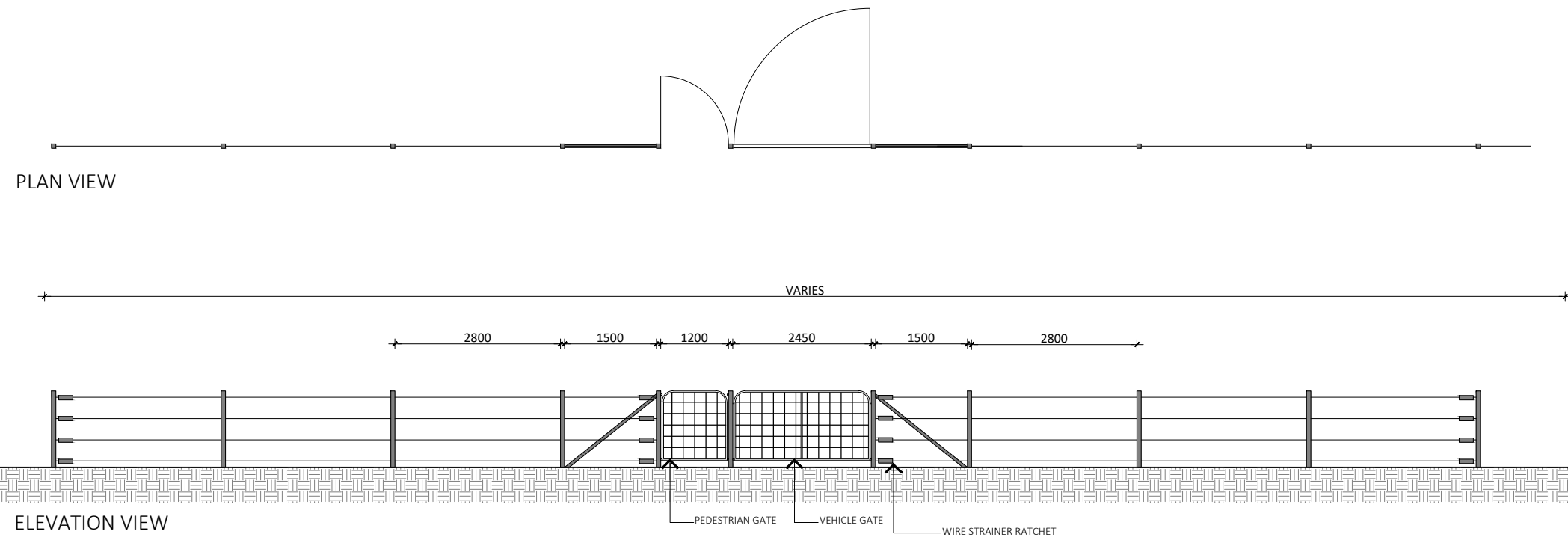
**3** BOARDWALK ELEVATION  
1:20



1 TRAIL GRID AND GATE  
1:50

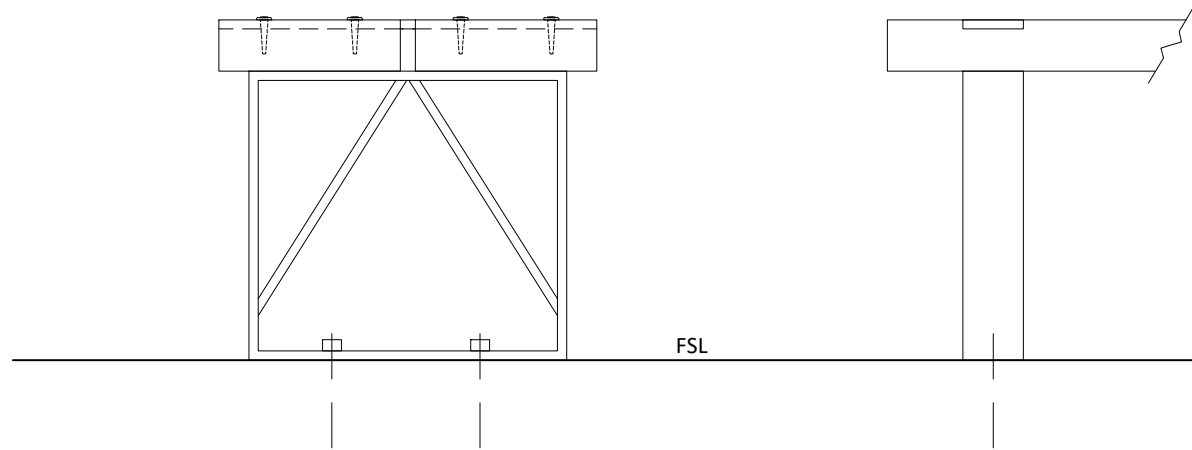


2 CATTLE GRID  
1:20



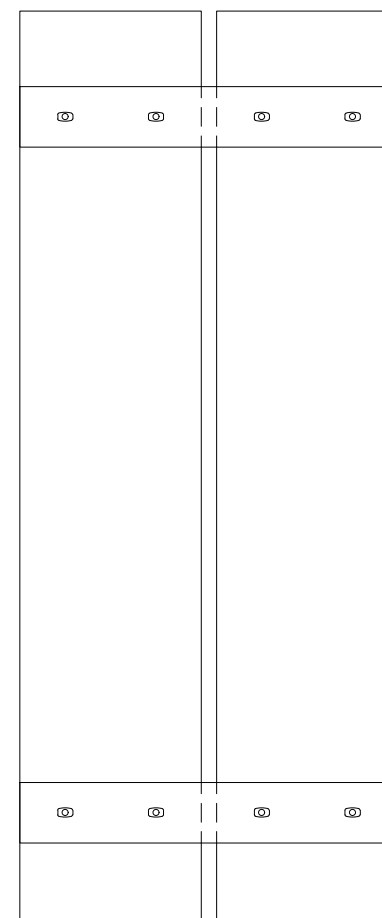
3 TRAIL DOUBLE GATE  
1:50

**NOTES:**  
 NOTE: SEAT HEIGHT CAN BE RAISED TO 600mm TO ACT AS HORSE DISMOUNT SEAT

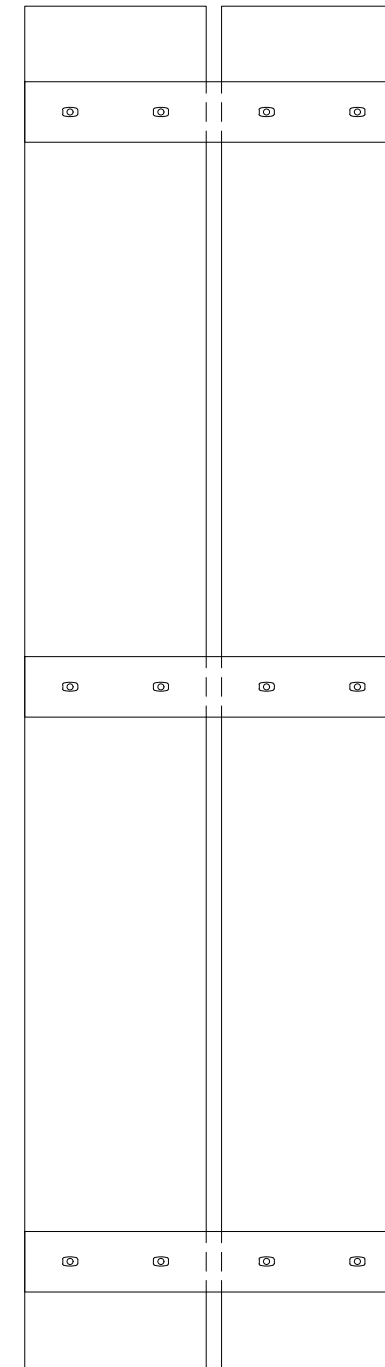


END ELEVATION

SIDE ELEVATION



PLAN - 1200mm SEAT



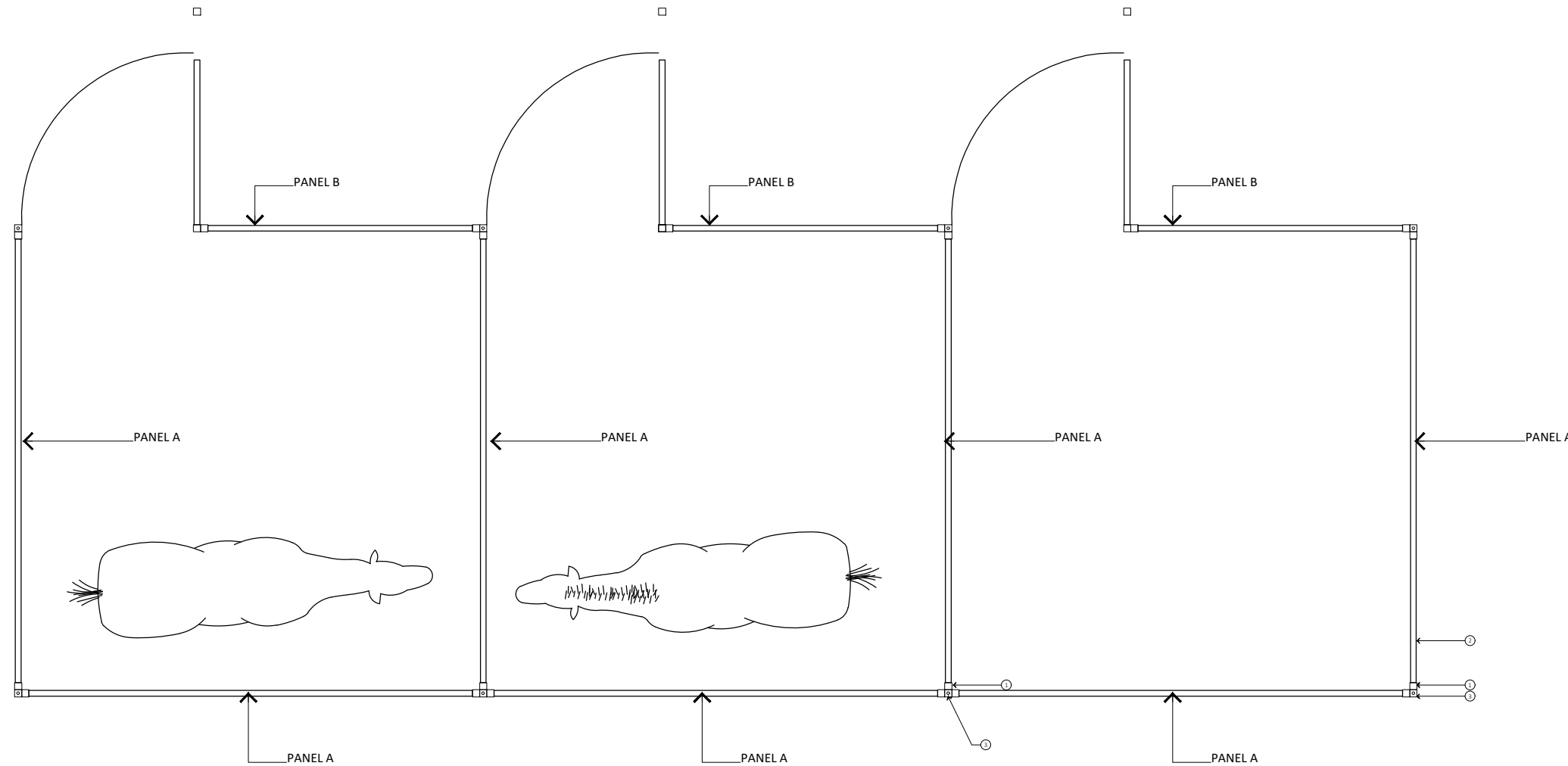
PLAN - 1800mm SEAT

1 TRAIL SEAT  
 1:5

**DRAFT**

ISSUE	DETAILS	DATE	DES	DC	QA
D	DRAFT CONCEPT DESIGN	2021-09-07	NH	GE	GE
C	DRAFT CONCEPT DESIGN	2021-08-27	NH	GE	GE
B	DRAFT CONCEPT DESIGN	2021-07-16	AS	ME	GE
A	DRAFT CONCEPT DESIGN	2021-06-18	ME	ME	GE

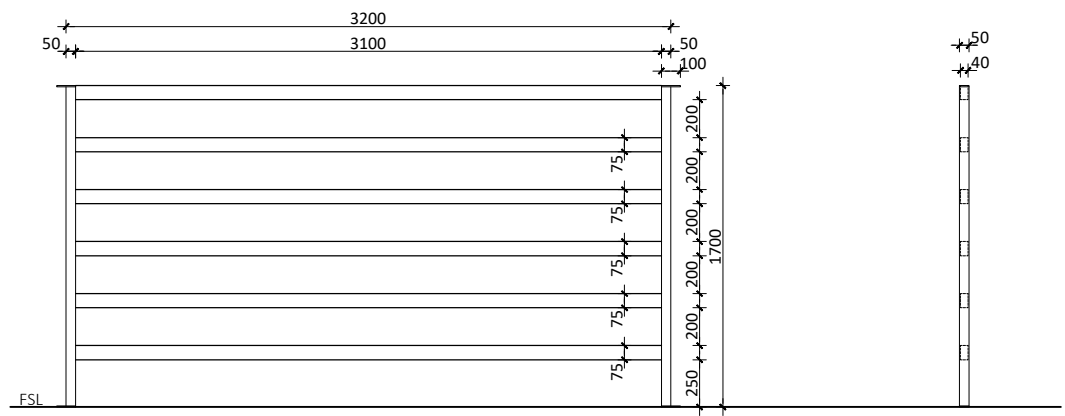




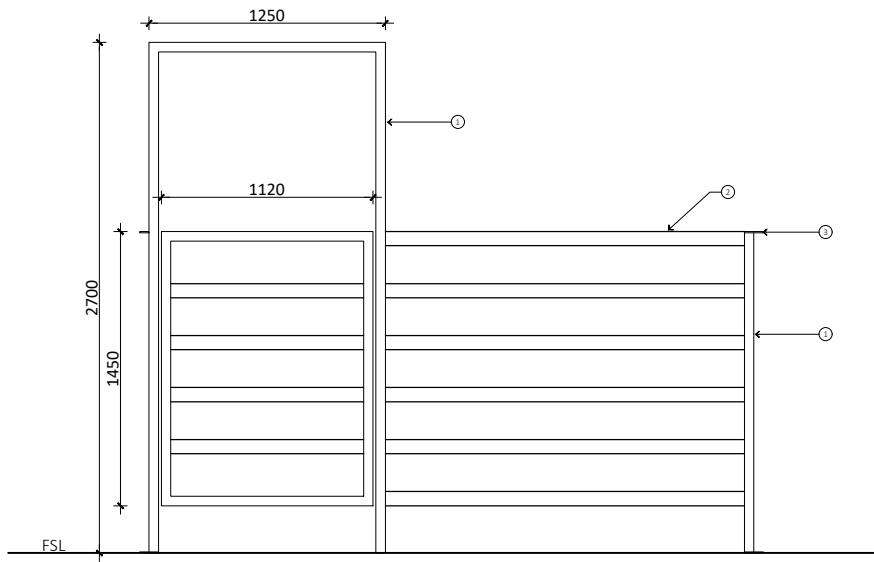
**NOTES:**

- ① **OUTER FRAME & POSTRS:** Galvanised 50x50mm Steel RHS  
Finish: Brown Powder Coat finish
- ② **RAIL:** Galvanised 40x75mm Steel RHS  
Finish: Brown Powder Coat finish
- ③ **FIXING PLATE:** 100x50x6 galvanised mild steel plate, CFW to postRS.  
To allow for M12 bolt fixing to adjacent panels
- ④ **FIXINGS:** All post to rail fixings to be CFW

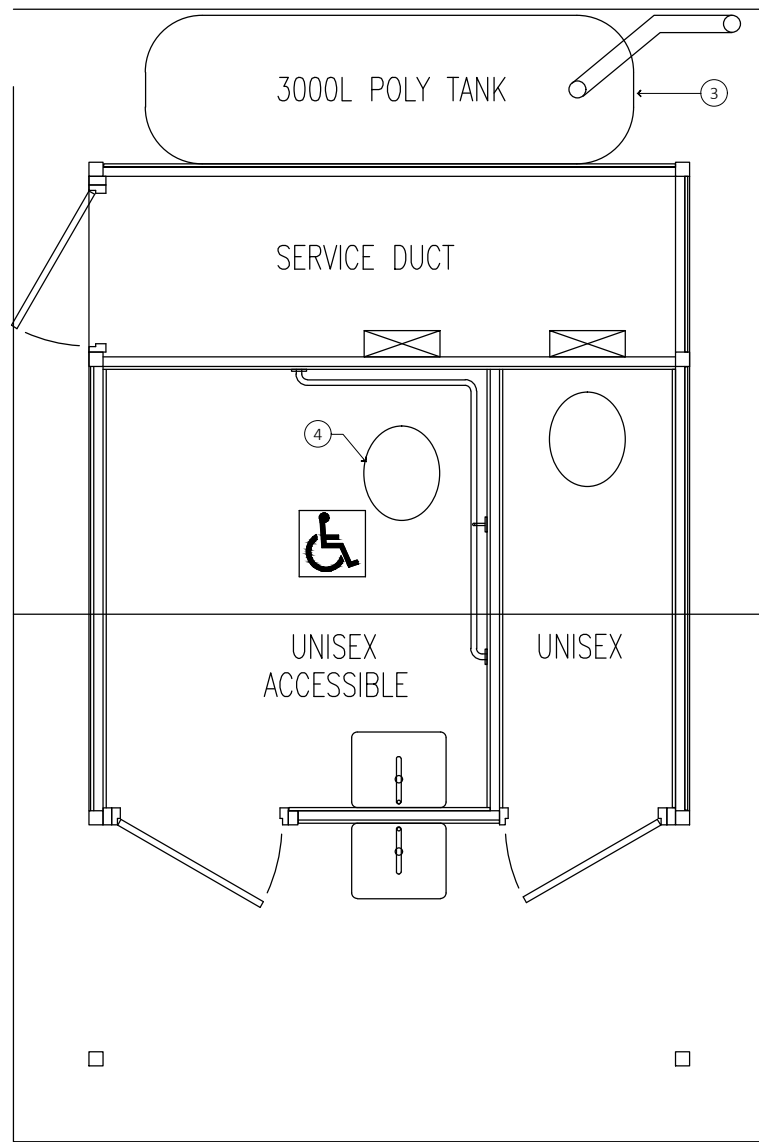
**1 HOLDING PEN - LAYOUT**  
LD01 1:20



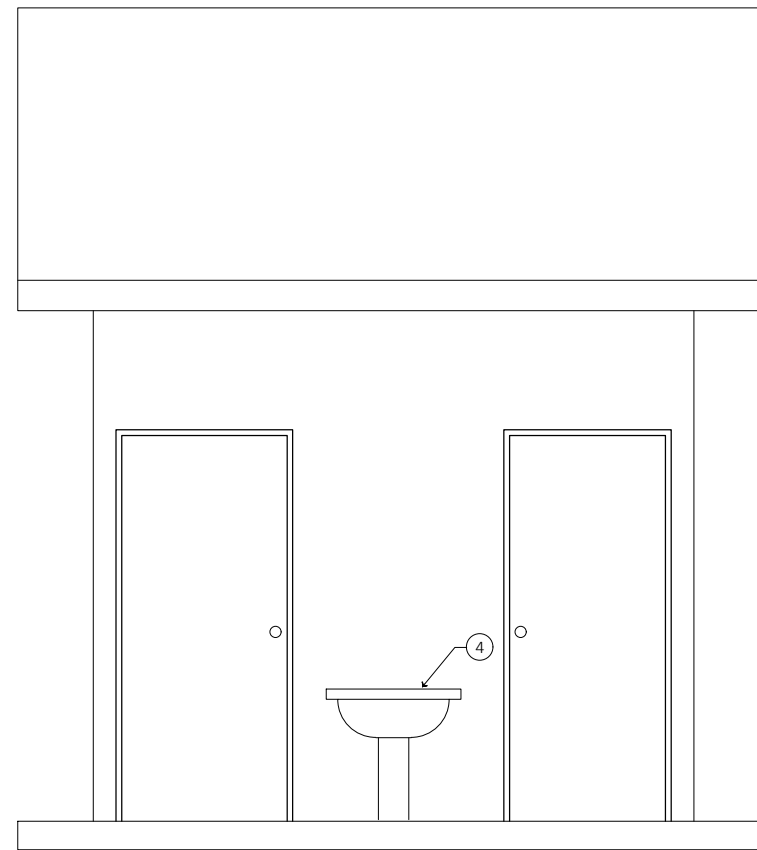
**2 PANEL A**  
LD01 1:20



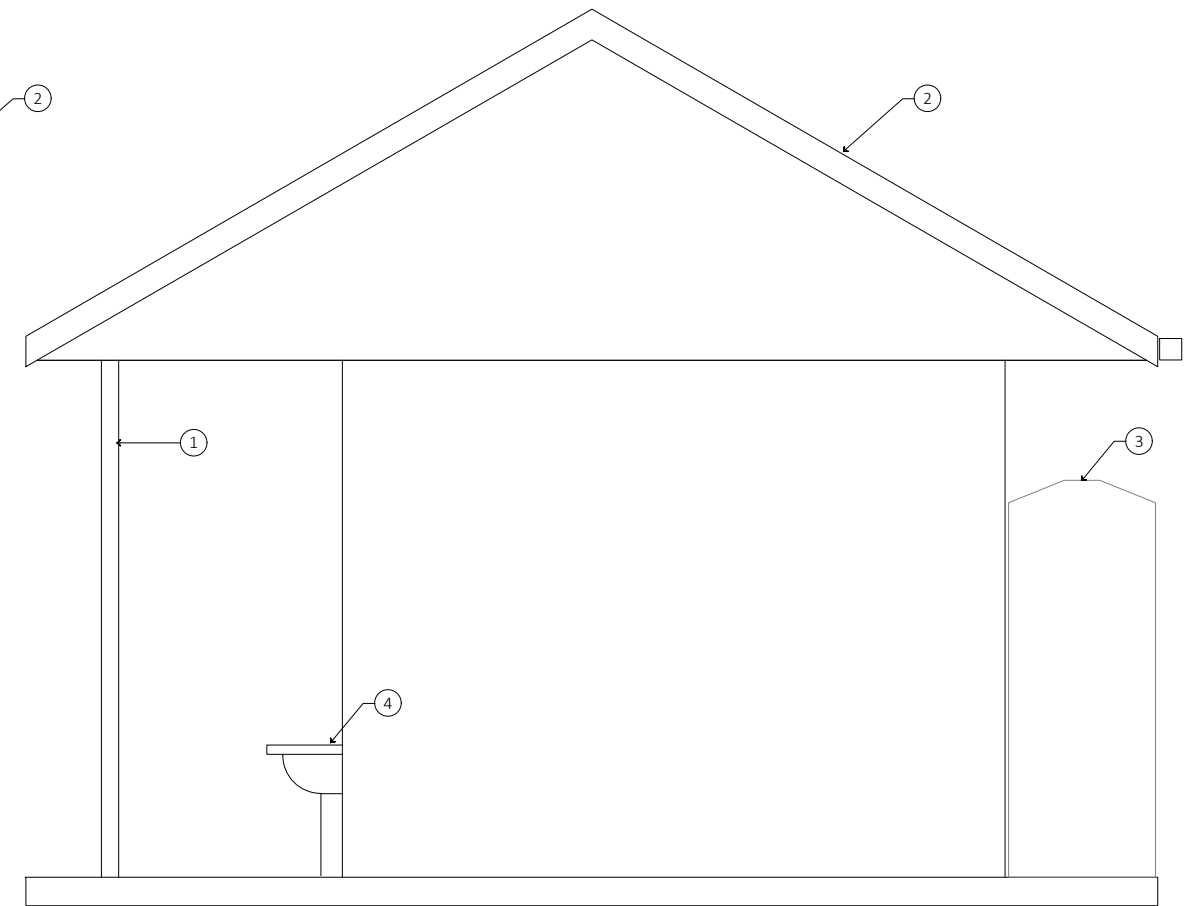
**3 PANEL B**  
LD01 1:20



FLOOR PLAN



FRONT ELEVATION



SIDE ELEVATION

- NOTES:**
- ① **FRAME:** Lightweight Galvanised SHS steel Frame.  
Finish: Powder coat finish to all exposed framing
  - ② **ROOF:** Lightweight Steel Frame  
'QR' Red colourbond sheeting
  - ③ **WATER TANK:** 3000L Galvanised water tank.  
All roof water to be captured for reuse.
  - ④ **FITTINGS:** All hardware and plumbing fittings to be accessible including basin.

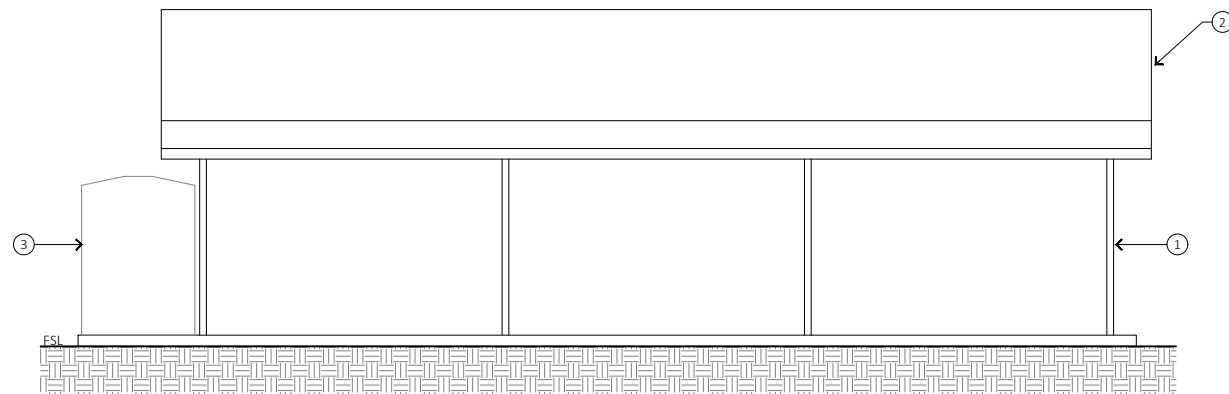
1 COMPOSTING AMENITIES BLOCK  
LD01 1:20

**NOTES:**

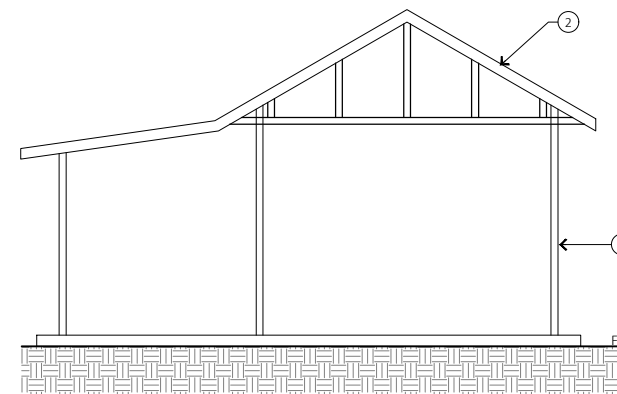
- ① **FRAME:** Lightweight Galvanised SHS steel Frame.  
Finish: White powder coat finish to all exposed framing
- ② **ROOF:** Lightweight Steel Frame  
'QR' Red colourbond sheeting
- ③ **WATER TANK:** 5000L Galvanised water tank with tap outlet.  
-"NOT POTABLE" Sign  
All roof water to be captured for reuse.

**FURNITURE:**

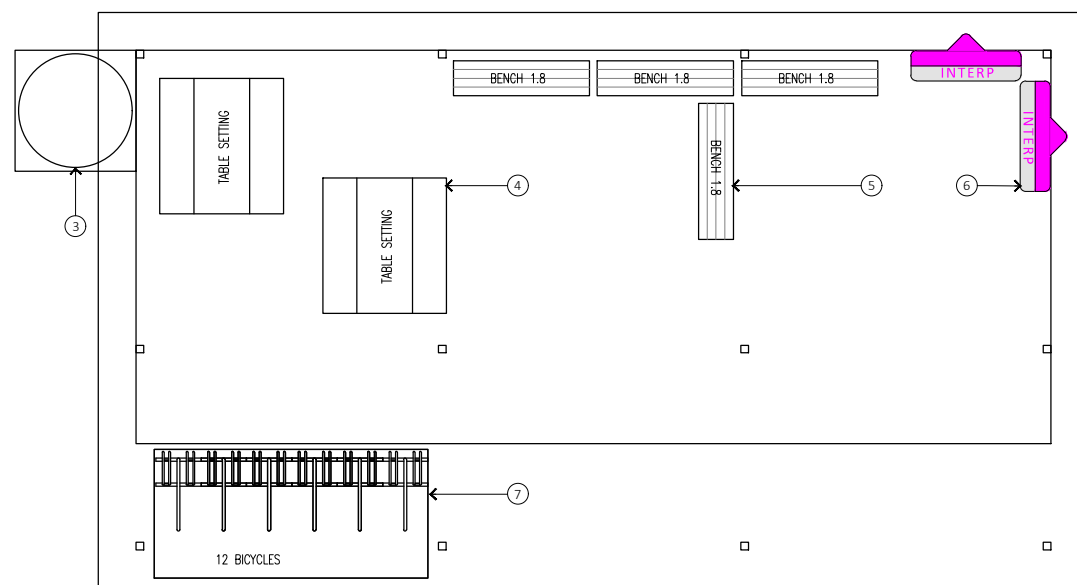
- ④ -2 x Picnic table settings
- ⑤ -4 x 1.8m Trail seaTRS - Refer TD08
- ⑥ -2 x Large Interp signs - Refer TD04
- ⑦ -1 x 12 Bicycle Rack



FRONT ELEVATION



SIDE ELEVATION

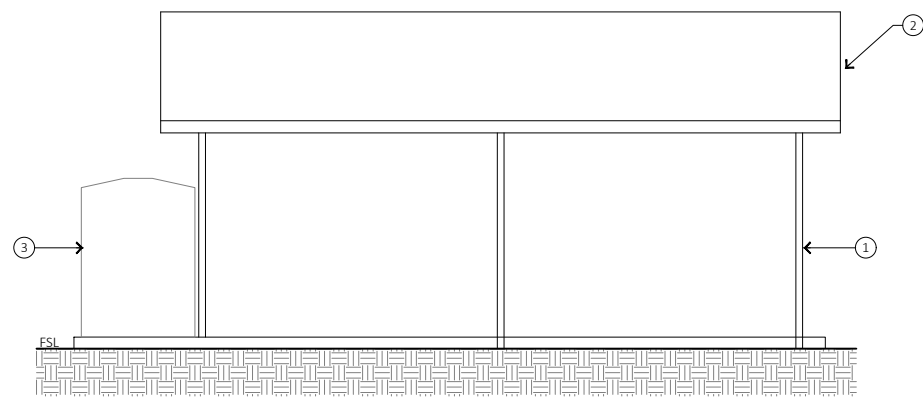


FLOOR PLAN

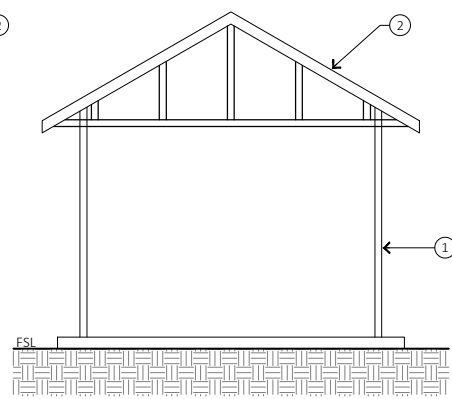
1 SHELTER - LARGE  
LD01 1:50

**DRAFT**

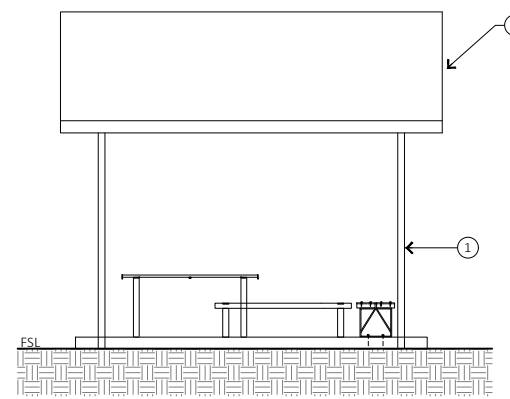
ISSUE	DETAILS	DATE	DES	DC	QA
D	DRAFT CONCEPT DESIGN	2021-09-07	NH	GE	GE
C	DRAFT CONCEPT DESIGN	2021-08-27	NH	GE	GE
B	DRAFT CONCEPT DESIGN	2021-07-16	AS	ME	GE
A	DRAFT CONCEPT DESIGN	2021-06-18	ME	ME	GE



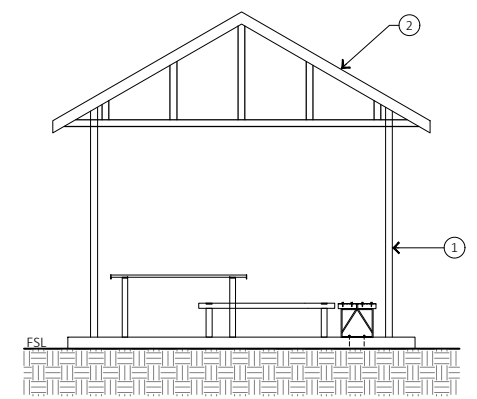
FRONT ELEVATION



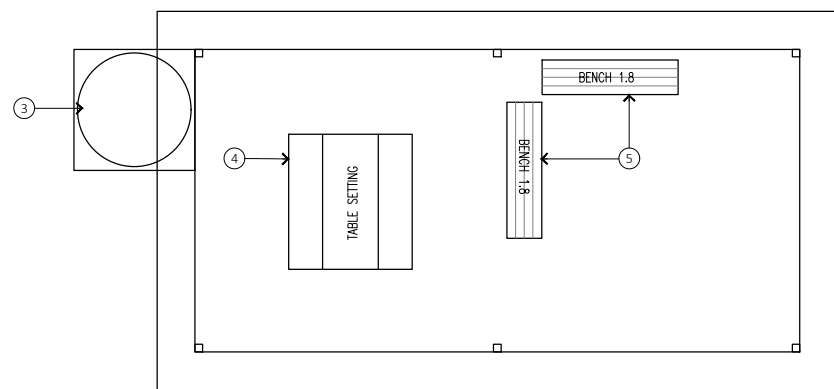
SIDE ELEVATION



FRONT ELEVATION



SIDE ELEVATION



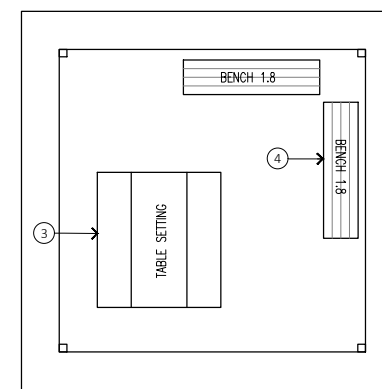
FLOOR PLAN

**NOTES:**

- ① **FRAME:** Lightweight Galvanised SHS steel Frame.  
Finish: White powder coat finish to all exposed framing
- ② **ROOF:** Lightweight Steel Frame  
'QR' Red colourbond sheeting
- ③ **WATER TANK:** 5000L Galvanised water tank with tap outlet.  
"NOT POTABLE" sign  
All roof water to be captured for reuse.

**FURNITURE:**

- ④ -1 x Picnic table settings
- ⑤ -2 x 1.8m Trail seaTRS - Refer TD08



FLOOR PLAN

**NOTES:**

- ① **FRAME:** Lightweight Galvanised SHS steel Frame.  
Finish: White powder coat finish to all exposed framing
- ② **ROOF:** Lightweight Steel Frame  
'QR' Red colourbond sheeting

**FURNITURE:**

- ③ -1 x Picnic table settings
- ④ -2 x 1.8m Trail seaTRS - Refer TD08

1 SHELTER - MEDIUM  
LD01 1:50

2 SHELTER - SMALLL  
LD01 1:50